

Alto Saxophone 1
Soprano Saxophone
Alto Saxophone

Classic Games Medley

arr. J. Morley-Smith

"Super Mario Theme"

Rubato

A $\text{♩} = 200$

mf *f* *mp*

7

12

16 **B** 6 3

26 **C**

30 2 rall.. 2

Musical score for 'Super Mario Theme' in A major, 2/4 time. The score is written for Alto Saxophone 1, Soprano Saxophone, and Alto Saxophone. It begins with a 'Rubato' marking. The first staff (measures 1-6) includes dynamics *mf* and *f*, and a box labeled 'A' with a tempo marking of quarter note = 200. The second staff (measures 7-11) includes a *mp* dynamic. The third staff (measures 12-15) continues the melody. The fourth staff (measures 16-25) includes a box labeled 'B' and a six-measure rest. The fifth staff (measures 26-29) includes a box labeled 'C'. The sixth staff (measures 30-37) includes a two-measure rest, a 'rall.' marking, and another two-measure rest. The key signature is A major (three sharps) and the time signature is 2/4.

"The Legend Of Zelda - Ocarina of Time"

D $\text{♩} = 82$

p 3

38

44 3

49 accel. $\text{♩} = 152$

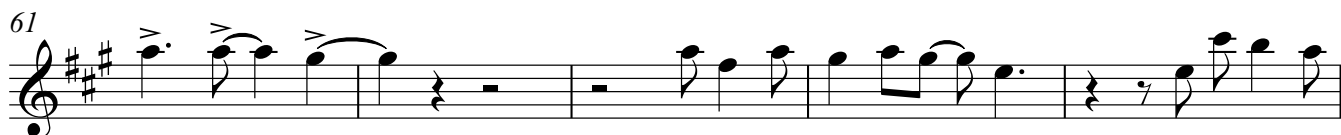
Musical score for 'The Legend Of Zelda - Ocarina of Time' in A major, 4/4 time. The score is written for Alto Saxophone 1, Soprano Saxophone, and Alto Saxophone. It begins with a box labeled 'D' and a tempo marking of quarter note = 82. The first staff (measures 38-43) includes a *p* dynamic and triplet markings. The second staff (measures 44-48) includes triplet markings and accents. The third staff (measures 49-53) includes an 'accel.' marking and a tempo marking of quarter note = 152. The key signature is A major (three sharps) and the time signature is 4/4.

55 **E** "Sonic The Hedgehog"



f

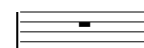
61



66

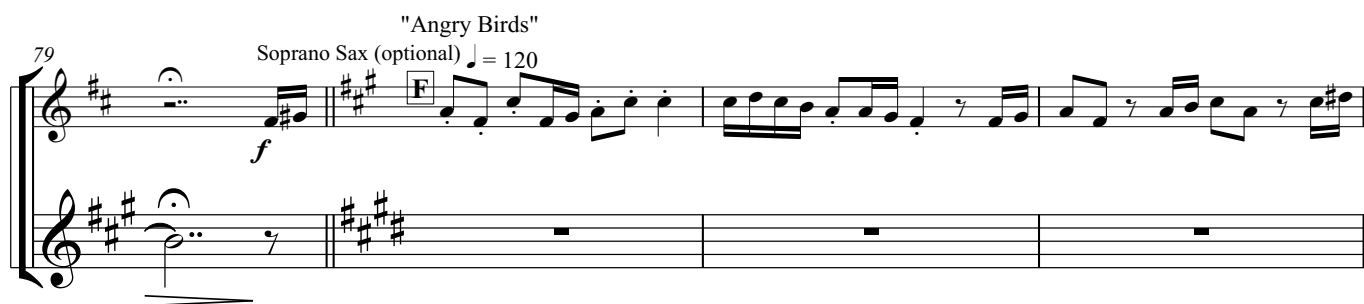


Soprano Saxophone



79 **F** "Angry Birds"

Soprano Sax (optional) ♩ = 120



f

83



86



89

Alto Sax.

93

97

100

"Mario Bros Underworld Theme"

♩ = 100

103

106

111

 "Super Mario Galaxy Theme"
 ♩ = 120
 3 3 3 3 3

115 **I**

121 **J**

 mf

126

130

134 **K** 10 rall. ♩ = 96

 f

147 **L**

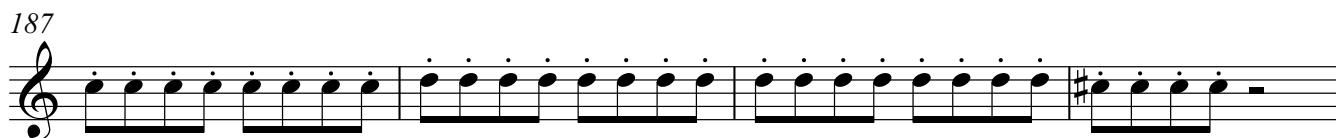
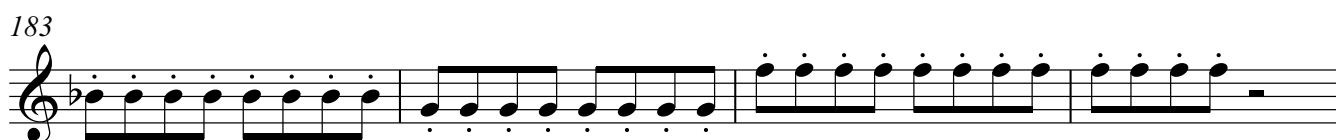
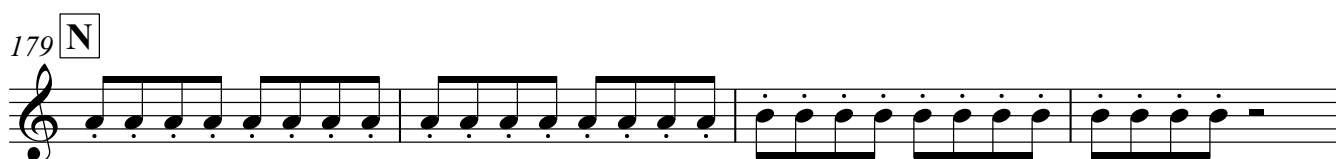
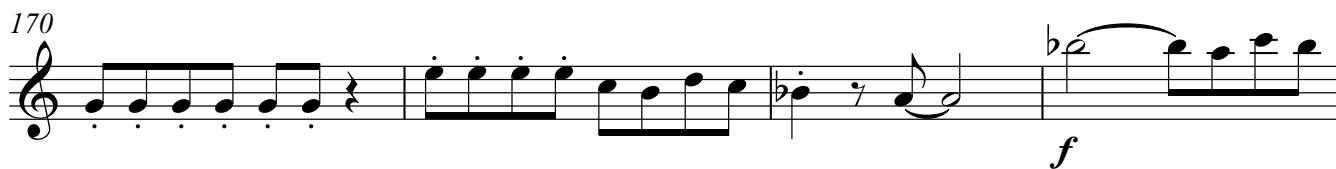
152

 mf

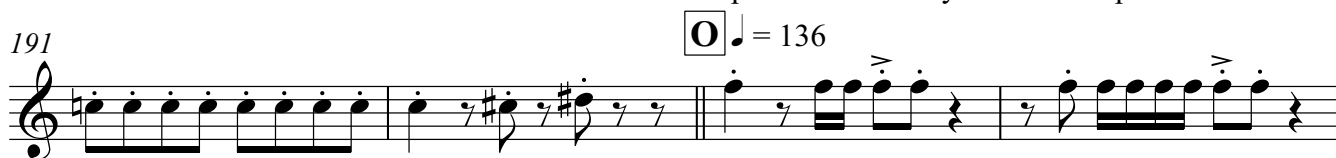
157

"Gusty Garden Galaxy"
 162 **M** ♩ = 136

 p



"Super Mario Galaxy Theme - Reprise"



207 P

211

215

218